

- | | |
|--|--|
| Subject Parcel | Wetland Area |
| ANRAD Review Area | 100-ft Buffer Zone |
| Parcel Boundary | No-Contest Buffer Zone |
| BVW Boundary (Delineated) | MassDEP Mapped Wetland |
| IWV Boundary (Delineated; Not Jurisdictional) | Access |

Notes:
 Wetland Delineation conducted by Fuss & O'Neill on August 5 and 16, November 10 and 28, 2022.
 Wetland flag locations located by a Harold L. Eaton & Associates, Inc., Massachusetts PLS #35032.
 The No-Contest Buffer Zone extends 100 feet from the subject parcel boundary.

Wetland Delineation Overview

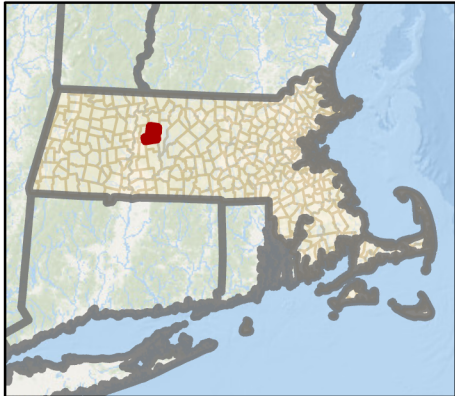
66 Leverett Road
 Shutesbury, Massachusetts

February 2023 (last revised)



FUSS & O'NEILL
 1550 Main Street, Suite 400
 Springfield, MA 01103
 413.452.0445 | www.fando.com

**Figure
2**



- Subject Parcel
- ANRAD Review Area
- Parcel Boundary
- Access
- BVW Boundary (Delineated)
- IVW Boundary (Delineated; Not Jurisdictional)
- Wetland Flag
- Wetland Area
- 100-ft Buffer Zone
- No-Contest Buffer Zone
- MassDEP Mapped Wetland

Notes:
Wetland Delineation conducted by Fuss & O'Neill on August 5 and 16, November 10 and 28, 2022.
Wetland flag locations located by a Harold L. Eaton & Associates, Inc., Massachusetts PLS #35032.
The No-Contest Buffer Zone extends 100 feet from the subject parcel boundary.

0 25 50 100 Feet



Wetland Flag Locations

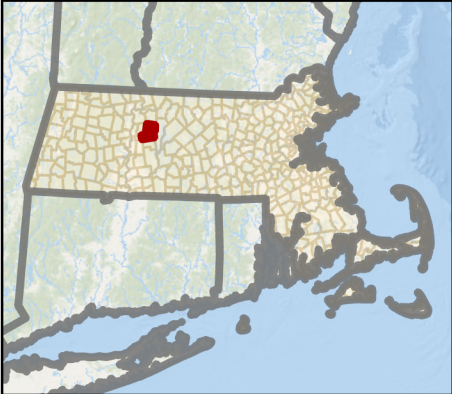
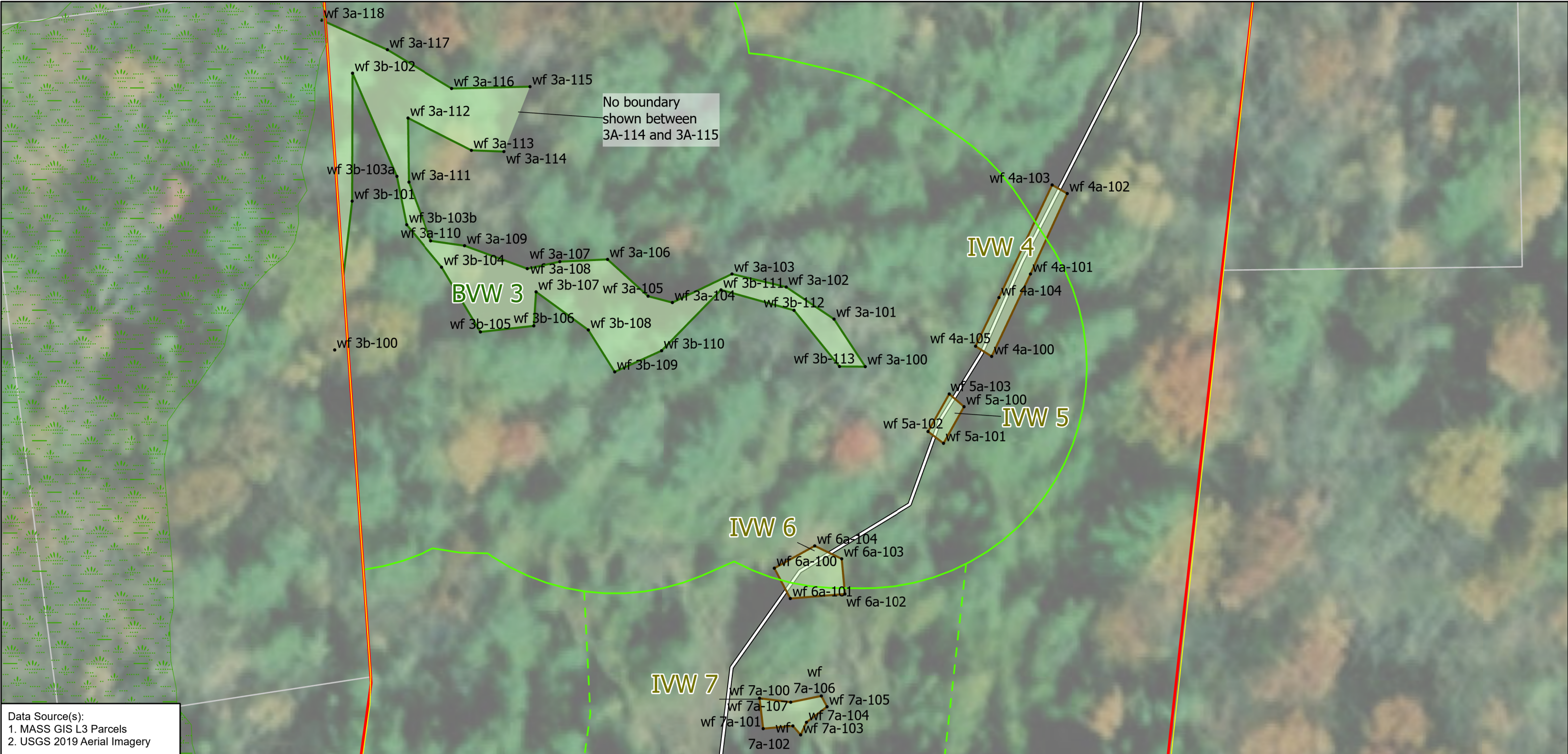
66 Leverett Road
Shutesbury, Massachusetts

February 2023 (last revised)



1550 Main Street, Suite 400
Springfield, MA 01103
413.452.0445 | www.fando.com

**Figure
3-1**



- Subject Parcel
- ANRAD Review Area
- Parcel Boundary
- Access
- BVW Boundary (Delineated)
- IVW Boundary (Delineated; Not Jurisdictional)
- Wetland Flag
- Wetland Area
- 100-ft Buffer Zone
- No-Contest Buffer Zone
- MassDEP Mapped Wetland

Notes:
Wetland Delineation conducted by Fuss & O'Neill on August 5 and 16, November 10 and 28, 2022.
Wetland flag locations located by a Harold L. Eaton & Associates, Inc., Massachusetts PLS #35032.
The No-Contest Buffer Zone extends 100 feet from the subject parcel boundary.



Wetland Flag Locations

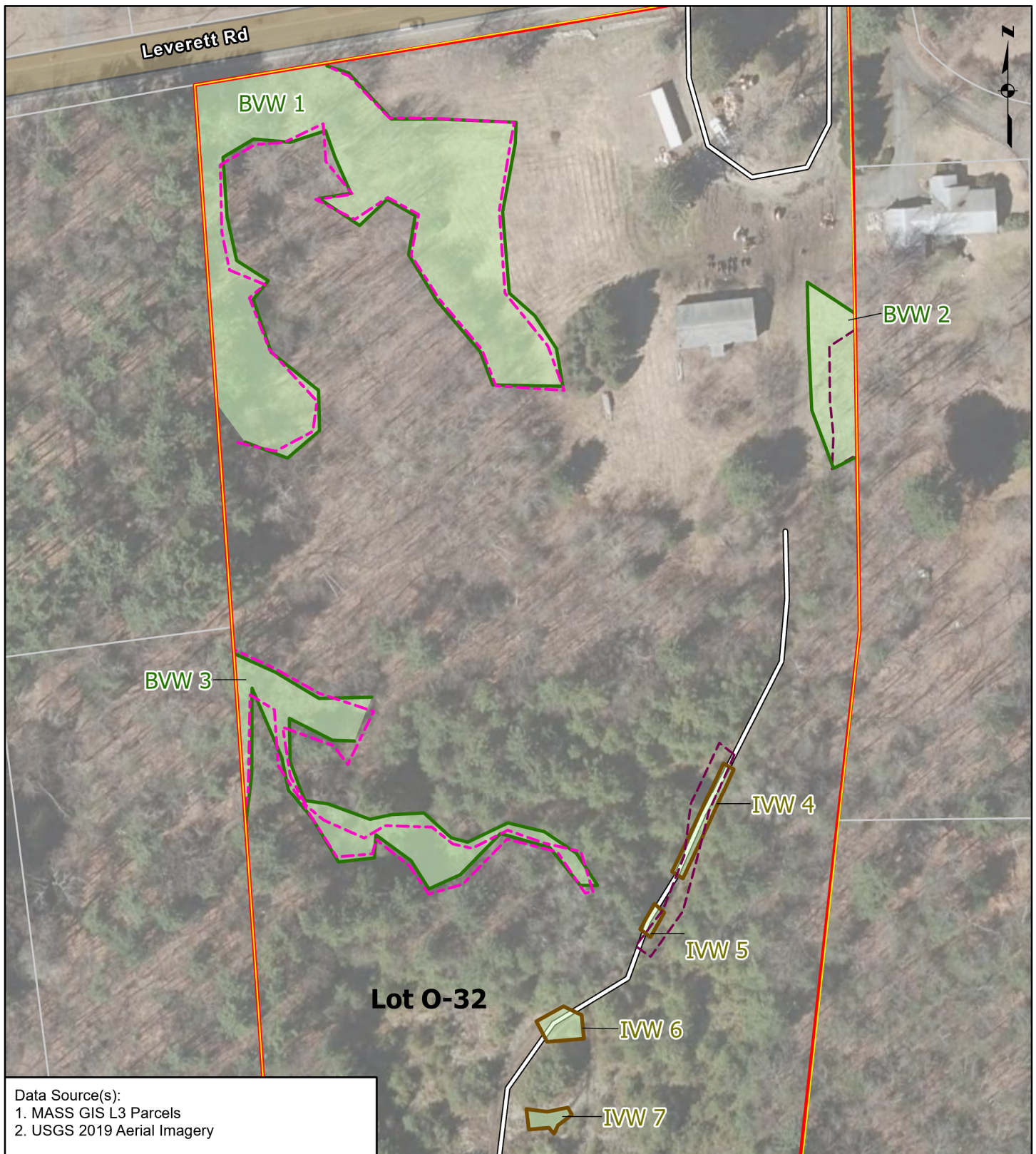
66 Leverett Road
Shutesbury, Massachusetts

February 2023 (last revised)

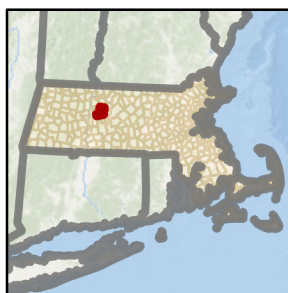


1550 Main Street, Suite 400
Springfield, MA 01103
413.452.0445 | www.fando.com

Figure 3-2



Data Source(s):
 1. MASS GIS L3 Parcels
 2. USGS 2019 Aerial Imagery



- | | |
|----------------------|-------------------------|
| ANRAD Review Area | BVW Boundary (Original) |
| Subject Parcel | IWV Boundary (Original) |
| BVW Boundary (Final) | Parcel Boundary |
| IWV Boundary (Final) | Access |
| Wetland Area (Final) | |

0 25 50 100 Feet

Notes:
 Wetland Delineation conducted by Fuss & O'Neill on August 5 and 16, November 10 and 28, 2022.
 Final wetland flag locations located by a Harold L. Eaton & Associates, Inc., Massachusetts PLS #35032.

Wetland Delineation Change

66 Leverett Road
 Shutesbury, Massachusetts

February 2023 (last revised)

FUSS & O'NEILL
 1550 Main Street, Suite 400
 Springfield, MA 01103
 413.452.0445 | www.fando.com

**Figure
4**