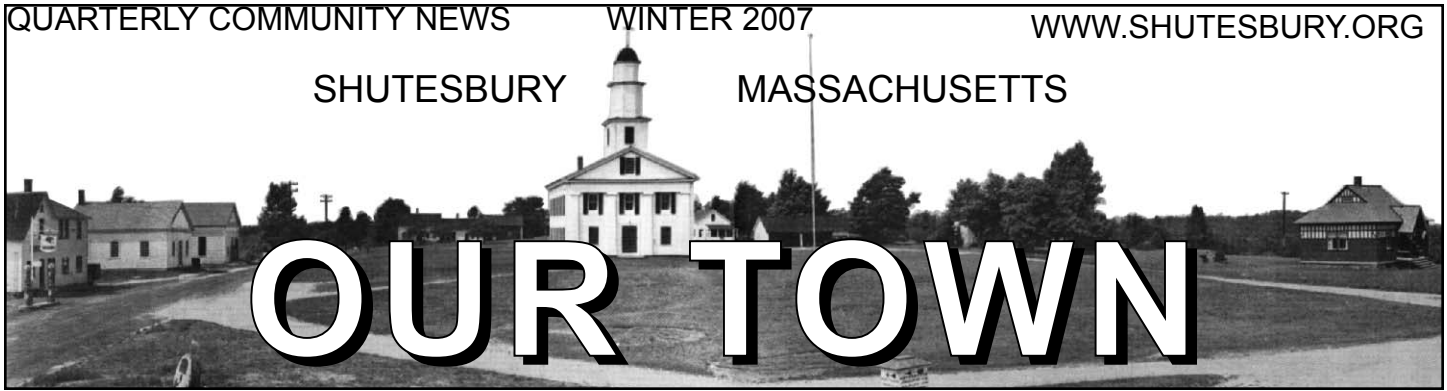


SHUTESBURY

MASSACHUSETTS



# OUR TOWN

## There is still hope!

*The Shutesbury, Leverett, Wendell  
Broadband Committee*

In November the Shutesbury, Leverett, Wendell Broadband Committee said goodbye and gave great tribute to our founding chair **Aron Goldman**, who has worked tirelessly for three years to bring high speed Internet to our town. He turned the helm over to **Rob Brooks** of Leverett, who is now the acting chair. Our December 9 meeting was dominated by two exciting issues which we would like to share.

1. We prepared speakers to attend the **Deval and his Transition Team Public Forum Meeting** that occurred on December 10 at the Basketball Hall of Fame. Five committee members attended and two spoke to our cause. The following is a report of the meeting from **Robbie Leppzer** (of Wendell):

**Ben Schwartz** and I (from

Wendell) were called on to speak about the need for high-speed broadband access in western Massachusetts. Teri Anderson, Economic Development Coordinator for Northampton, who works with Pioneer Valley Connect, also spoke at the forum. And from the results of the meeting, it appears we made a major impact.

When Gov.-Elect Patrick got up to speak at the end of the meeting, he himself highlighted the need for broadband access throughout the state. He emphasized the point that "this is not a luxury" and is a key to the economic growth and development of the Commonwealth.

After the formal part of the meeting, Richard Rowe, co-chair of the governor's technology taskforce, asked Robbie to help them in their recommendations to the governor by coming up with a ballpark estimate of what it would cost to implement a plan to bring basic broadband access to town buildings, libraries and

schools in every town in Massachusetts.

Richard Rowe explained that this more limited concept of broadband access would be "more sellable" (in his words) in the short-term. We hope they would view this as a first step, or phase one, in an overall plan to bring a more comprehensive plan to bring broadband access to all households across the state.

Given that the governor's committee has asked us to provide input, I feel that this is a unique opportunity for us to be part of a process to shape a plan that could eventually achieve the goals for wider broadband access that many of us have been working for.

2. We made plans for a **visit from the V.P. of Public Affairs at Verizon**. He will be visiting Shutesbury and attending a meeting Tuesday, January 23 at 7:30 p.m. at Town Hall. We want to impress upon him the need  
*(Broadband, cont. on page 7)*

## 'For the Love of Libraries'

### Community library information meeting and chocolate party!

The Trustees and Friends of the MN Spear Library invite you to an informal gathering to talk about the library. If you are interested in being a part of the library's future or if you want free chocolate, join us on Sunday, February 11, 2007 2:00pm-4:00pm at the (Now Smoke Free) Shutesbury Athletic Club - cash bar. This event is open to all residents of Shutesbury (children with adult supervision).

- \* Meet the Trustees and talk about the library.
- \* See a 15-minute video starring the MN Spear Library
- \* Tell us what the library means to you.
- \* Join us!

\*\*\*Door Prizes!\*\*\*Surprises!\*\*\*FREE CHOCOLATE!\*\*\*

Call the Library at 259-1213 for more info.

## School lunch no longer just for kids and teachers!

**Gail Beauregard**, food service manager at Shutesbury Elementary School, has extended an invitation to parents and other adults in town to order lunch for take-out or eat-in dining at \$3.00 per meal.

Staff members at Town Hall are already taking advantage of the opportunity.

Chef Gail offers three options: the regular meal, a vegetarian version, or a cold lunch. The menu is posted at [www.shutesburyschool.org](http://www.shutesburyschool.org).

Call 259-1212 x15 by 10:00am on the day you wish to order. Food is served at 11:15 am. Please bring

## Messages from the Town Clerk

Leslie Bracebridge, *Town Clerk*  
Joan Hanson, *Assistant Town Clerk*  
Office Hours: Monday through  
Thursday 9:00am - 1:00pm  
Call 259-1204 for special  
appointments or to leave a message.

An **Annual Street List** form, requesting the household census on January 1 of this year, was mailed to each Shutesbury household. State law requires that these forms be completed and returned within ten days of receipt.

If your household did not receive a form, or if your form is misplaced, please call the Town Clerk's Office (259-1204) and one will be sent to you right away.

Returning the completed street list form keeps one's voter registration active, ensures one's continued receipt of municipal mailings, and verifies eligibility for the trash bag distribution list in May!

**Just a click away** ... More and more documents available through this office are now also available for home access at [www.shutesbury.org](http://www.shutesbury.org).

For example, Shutesbury's September Primary and November 7 state election and recent town meeting results, current and proposed zoning bylaws, and meeting postings are all available on the website.

That said, information changes more quickly than websites can be corrected, so always feel welcome to check in by phone or in person, any time that you must have the most current information.

Shutesbury's **Annual Town Meeting and Election** will be on Saturday, May 5, 2007 at the Shutesbury Elementary School, 23 West Pelham Road. Polls will be open 8:00am - 2:00pm and the Town Meeting will begin at 9:00am.

If you are not already registered to vote, you must do so by Friday, April 13, 2007 to be eligible to vote on May 5.

## Positions that will be on the ballot due to term expirations:

<b>Board of Health</b>	<b>1 three-year position</b>
	<b>1 one-year position</b>
<b>Cemetery Commission</b>	<b>1 three-year position</b>
<b>Constable position</b>	<b>1 one-year</b>
<b>Board of Library Trustees</b>	<b>2 three-year positions</b>
	<b>1 two-year position</b>
<b>Moderator</b>	<b>1 three-year position</b>
<b>Planning Board</b>	<b>2 three-year positions</b>
<b>School Committee</b>	<b>1 three-year position</b>
<b>Board of Selectmen</b>	<b>1 three-year position.</b>

More positions may open up due to resignations. Some officials may decide not to run again. The previous Moderator has moved away from Shutesbury and therefore will not be seeking re-election.

If becoming an elected official is of interest to you, please call with any preliminary questions, or just stop in to sign a nomination form and to pick up other necessary paperwork.

You need only collect 20 signatures of registered voters for your name to appear on the May 5th ballot. Completed nomination forms must be returned by Monday, March 19.

You can register to vote anytime in person at the Town Clerk's office or you can call to have a mail-in voter registration card sent to you. You can also call to confirm your voter registration status.

**Absentee ballots** will be available for voters who cannot come to the polls, due to health concerns, religious restrictions or because they will be out of town, between the hours of 8:00am - 2:00pm on May 5. Absentee ballots will be available approximately four weeks in advance of the election, through noon on Friday, May 4.

You (or your relative on your behalf) may apply for an absentee ballot in person, or request a ballot by writing to the Town Clerk, P.O. Box 264, Shutesbury, MA 01072. Your request must include your residential address, the address to which you would like a ballot sent, and your signature.

If you apply in person, you can choose to vote at that time, or a ballot will be mailed to the location of your choice.

People sometimes ask if they can get an absentee ballot for the Town Meeting Articles. Absentee ballots are strictly for the election of officials and any ballot questions. Town Meeting articles are only voted on the floor of

Town Meeting after an open exchange of information.

Please feel welcome to call or stop in any time you have a question or have something of which the Town Clerk's office should be aware.

## Many thanks to all who answer our call!

As always, we appreciate the folks who turned out to help stuff, fold and label the last *Our Town* and other Town Hall mailings for distribution.

If you'd like to join future "work parties," please call the Town Clerk at 259-1204 to be added to our list of people to call. We welcome your help daytime, nighttime, in your home or at Town Hall, whenever or wherever it suits you best.

*Our Town*, published four times a year, is supported by tax dollars. We welcome news from Town of Shutesbury departments, boards, and committees, and from individuals and groups about local projects, activities, or special events of benefit to our community. Submissions promoting the sale of goods or services for private profit cannot be accepted.

Janis S. Gray, Editor  
Leslie Bracebridge, Town Hall  
Liaison



PRINTED ON  
RECYCLED STOCK  
30% POST CONSUMER WASTE

## Words of thanks to all our volunteers

David Dann, *Town Administrator*

I have been Shutesbury's Town Administrator now for two years, and I am still learning many of the different boards' and committees' missions and responsibilities.

I am awed by how much volunteers do. Much of the good work in our town is due to the hard work of many volunteers who spend a lot of time at meetings, research information, go on site visits, discuss with state officials complex issues, and interact with you, our citizens.

This time of year I want to acknowledge all of you who give so much of your time on our behalf. Thank you.

And if you would like to participate in our town as a volunteer, please call me at 259-1214 and we can talk how.

## Need a ride?

Did you know that Franklin Regional Transit Authority provides transportation, through the Stavros Center for Independent Living, for the elderly and disabled in our town?

Rides may be scheduled by calling Tom Filiault Monday-Friday at (413) 256-0473 between the hours of 9:00am-5:00pm.

## Notice to the voters of Shutesbury

The amendment to the Dog Licensing and Control Bylaw concerning the "Pick-up and Storage Fees" section approved at the October 17, 2006 Special Town Meeting has been approved by the Office of the Attorney General.

Under Massachusetts General Law Chapter 40 § 32, general bylaws do not take effect unless the town has first satisfied the posting requirement. Copies of the bylaw change are posted at the Locks Pond Bulletin Board, the Shutesbury Town Hall, Library, Post Office and at the Cushman Road Bulletin Boards.

## Assessors alley

Ken Holmberg, *Administrative Assessor*

As everyone will know when they read this article, the tax rate for FY07 has been set at \$17.81, which is an increase of 51cents from FY06's \$17.30.

There was no town-wide adjustment to values for FY07 with the exception of when there was a change to the property (new construction) or if errors and/or omissions were corrected.

Anyone seeking an abatement on their property must apply to the assessors by February 1 to be considered for this year. Application forms are available from our office and online at [www.shutesbury.org](http://www.shutesbury.org) under the town departments/assessors section.

### Exemptions

Various exemptions are available for the elderly (over 65 who meet income/asset guidelines) and for Veterans who have a documented service-related disability. The guidelines for eligibility for the 41-C (elderly) exemption are that you must have:

- \* lived in Massachusetts (as a primary residence) for the last 10 years
- \* owned the home you live in (in Shutesbury) for the last five years
- \* an income of \$20,000 or less if single and \$30,000 or less if you are married.
- \* assets of \$40,000 or less (single) or \$55,000 (married), excluding home.

If you wish to apply for an exemption you must do so prior to April 1. Application forms are available at the Assessors office.

### Taxable Personal Property

Owners of small businesses, owners of second homes, and property owners with unregistered trailers, construction equipment, and other taxable property, are subject to the personal property tax in Shutesbury. For an explanation of taxable personal property, go to the assessors web page referred to above. There you will find the explanation of what is taxable as well as business form of list (State Tax

Form 2) and the household furnishing (HF) form of list, primarily for owners of second homes, but also for ALL owners of unregistered vehicles, construction equipment, and farm animals.

We are mailing a Form of List to all known owners of taxable personal property in Shutesbury and ask that you return it to our office by March 1, 2007. Please feel free to call our office at 259-3790 if you have any questions. We appreciate your cooperation in this endeavor.

## What you should know about auto excise taxes

Please, PLEASE pay your excise taxes – even if you have moved or taken your car off the road!! AFTER you have made timely payment, THEN file for an abatement if you think one is due. In this manner, you will NOT INCUR ANY PENALTIES!

Abatements are due if (1) you have moved and registered your car out of STATE BEFORE OR DURING the calendar year for which you are billed, or (2) you have moved and changed your registration to another TOWN BEFORE THE START of the calendar year for which you were billed; or (3) you have disposed of the car AND have either returned or transferred the plates.

Unregistered cars which remain in your ownership cannot be abated, nor can abatements be given if you dispose of the car but keep the plates. Note that NO ABATEMENTS UNDER \$5.00 can be granted and no abatements can be given if the balance remaining due is less than \$5.00.

Abatements are handled by the ASSESSOR'S office (not the tax collector); forms are available in our office or on-line ([Shutesbury.org](http://Shutesbury.org) under Assessor's). ALL appropriate documentation (such as bill of sale/trade/junk/gift and copy of new registration if you've moved or transferred the plate, or copy of plate return receipt) must be included with all abatement forms. If you are unclear as to what is needed, please call us (259-3790).

## Note from the Town Collector

Ellen McKay, *Tax Collector*

Dear Shutesbury taxpayers,

With the winter upon us, the third quarter of our real estate bills and the calendar 2007 motor vehicle excise bills are rapidly approaching.

The third quarter real estate bills were mailed out the end of December and must be received by this office no later than February 1 to avoid interest. This bill will probably be a different amount than that of your first two quarters, as it is based on your fiscal 2007 assessment and on the new tax rate. To calculate your total tax responsibility for the entire fiscal year, multiply your valuation on the third quarter bill by the new tax rate.

If you have any questions on the value of your property or if you wish to apply for an abatement or exemption, please contact the Board of Assessors at 259-3790.

The calendar 2007 motor vehicle excise tax bills on vehicles registered at the end of 2006 are usually received from the Registry of Motor Vehicles during the first quarter of the new year. (See related article, page 3.)

We have implemented a new on-line bill paying feature that will allow you to pay your tax bills either directly from your checking or savings account with no fee or your Master Card or Discovery credit card for a fee based on the amount of your transaction.

To use this service, click on the Town's website and then on the announcement on the Home page. For Real Estate and Personal Property taxes, you should enter 2007 for the year and just the bill number WITHOUT the RE or PP to enter the program. For motor vehicle payments, enter the year and bill number on the top, right side of your bill.

Before venturing out to pay a bill in person, please call this office at 259-1615 to check the answering machine to determine if I will be here.

Have a happy, healthy, and safe New Year.

## In the event of an actual emergency...

Catherine Hilton, *Board of Health*

They may not have known it, but the 51 people who came to Town Hall on December 15 to get a flu shot weren't just protecting themselves against the flu. They were helping the Board of Health practice what to do in case of a large disease outbreak. The large meeting room in Town Hall was configured as an Emergency Dispensing Site (EDS) for the morning.

**Bill Elliott**, chairman of the Board of Health, organized the clinic as an exercise of the town's EDS plan, which requires that large numbers of people be vaccinated or inoculated swiftly and efficiently in the case of an outbreak of pandemic disease.

He devised a simple tracking system using file cards to analyze the site's "through-put," or the time it takes for a person to sign in, be evaluated, treated, and signed out.

**Aliza Porth** of the UMass School of Public Health and **Linda Rotondi** of University Health Services were present as observers; their notes will help the Board of Health improve its performance.

Because this was not just a flu shot clinic, more people than usual were needed to help out.

Injections were given by nurses **Judy Titus** and **Bonnie Grenier** of the Community Health Center of Franklin County.

The site was manned by Board of Health members **Bill Elliott**, **Arleen Read**, and **Catherine Hilton**, with the indispensable aid of **Leslie Bracebridge** and **David Dann** of Town Hall staff; **Ken Hartwright** and **Justin Wall** of the Police Department; volunteers **Margery Bancroft**, **Ann Marie Kenerson**, **Ronald Meck** and **Marilyn Tibbetts**; and school nurse **Dennise Forsman**.

If you are willing to help in the event of an emergency, please call the Board of Health at 259-2122 and leave your name, address, and phone number. Thanks!

## Conservation Commission passes torch and seeks new members

Linda Avis Scott, *Clerk, Conservation Commission*

The Shutesbury Conservation Commission expresses its gratitude to **Linda Rotondi**, who resigned in October, for her commitment to the work of the commission. Her energy, humor and snacks will be missed.

We welcome **Kevin Weir** of Pratt Corner Road as the newest member of the commission to serve our town.

The Shutesbury Conservation Commission continues its efforts to protect our wetlands as charged by the Massachusetts Wetlands Protection Act and the Shutesbury General Wetlands Protection Bylaw.

Under the Conservation Commission Act of 1957, the Conservation Commission is the "official agency specifically charged with the protection of a community's natural resources." In 1972, Conservation Commissions were given responsibility for administering the Wetlands Protection Act. Commissions then began to serve their communities in a regulatory capacity as well.

Our town's Conservation Commission is seeking one or two new members. We welcome those interested in open space and water resource protection, and with a willingness to gain working knowledge of the Wetlands Protection Act, to attend our meetings.

We would especially welcome expertise in engineering, hydrology and soils.

The Shutesbury Conservation Commission meets the second and fourth Thursdays of each month March - October and the second Thursday of the month November - February at 7:00pm.

Site visits are done prior to the Thursday meetings; during the winter, visits are done weekend mornings.

For more information about our Commission please see our page on the town website or call us at 259-2123 extension #2.

## Notes from the School Committee

Dan Hayes, *Chair, School Committee*

The School Committee would like to thank our dedicated teachers and staff for their hard work and commitment to the success of every child. Success is measured in a variety of ways, from academic to social and emotional growth.

I am proud to see a rigorous curriculum, one that is contiguous and challenging for children, with clear goals and objectives. This curriculum has benchmarks that provide expectations and assessment which lead to the understanding of each child's learning style. This plan also integrates social, behavioral and civic awareness and environmental stewardship. The curricula are evolving all the time.

Teachers utilize assessment and classroom observations in order to re-evaluate their lesson plans and delivery models, and address modifications that are necessary to promote a learning environment that is interesting, challenging and supportive.

Our school has adopted a new math program called Investigations, for grades one through five, and we continue with Connected Math for grade six. We have put a lot of resources into developing a comprehensive program, one that teaches math facts, understanding everyday math problems and building skills that will benefit students as they matriculate into the Amherst Middle School. There has been an emphasis on professional development with support from **Polly Wagner**, our math coach.

Additionally, we are utilizing research-based programs for reading (Foundations) and spelling (Spellography). These programs provide a foundation from which teachers work, with ongoing support from our Reading Specialist, **Laurel Lussen**.

Teachers build upon this base by bringing in their expertise, life experiences and dynamic self-styled approaches. It is the teacher's ability to connect with students that engages them, promoting a love of learning and building confidence and self-

esteem.

With teachers and staff in mind, I want to first recognize **Ken Lindsay**, who has retired, and **Terri Wells**, who will be leaving in February. Their years of service to our children and our community have been remarkable, and the School Committee wants to express our deepest gratitude. I also want to announce that **Tony Thurston**, our Food Service Director, has moved on to bigger opportunities and **Sara Evans**, our School Office Manager, has resigned in order to stay home after the birth of her first child. Congratulations to all of them. They will surely be missed.

I would also like to welcome **Pat De Angelis**, our fourth grade teacher; **Toni Costa**, our Office Manager; **Gail Beauregard**, our Food Service Director; and **Bernadette Marian**, a paraprofessional.

One of the biggest challenges we are facing this year is school safety. Given national events, local situations, as well as ever-changing family dynamics, the School Committee in collaboration with the school Administration and Safety Committee, has been re-examining all aspects of school safety.

There was a unanimous decision to purchase and install a broadcast communication system. This system will permit immediate communication throughout the school and school grounds, in the event of an emergency. We now utilize a mobile communication system on the playground, and monitor them for emergency situations and threatening weather conditions. There was a community forum sponsored by the Administration to gather input from the community as safety concerns are being addressed. Our intention is to develop a security plan that is comprehensive, non-threatening, and integrated into the



Four 6th graders had their art work chosen for the permanent art gallery at SES in the conference room and the main office. Every year the PTO has student art work selected and professionally framed to add to our collection. This tradition was started in 1999 and 30 pieces of student work now beautify the school.

Left to right, the artists are K. Armitage, L. Berlin, E. Weiner and L. Thompson-Martin.

Photo by BZ Reily

daily routines of the school in a way that is truly effective.

There are many other wonderful things going on in our school. We are excited about the solar array on our roof. It provides an opportunity to connect children with their natural

*(School, cont. on page 9)*

## Mid-year enrollment for Shutesbury Preschool!

For this year only, an exception is being made in our preschool program. If your child's 3rd birthday was between September 1 and December 31, 2006, and you are interested in having your child attend preschool for 2.5 years, then please contact us for possible placement now.

The openings are for:

Monday, Tuesday, Thursday and Friday Full-Day: (8:30am to 3:00pm), Half-Day:(8:30am to 12:30pm) and Wednesday (8:30 to 11:30am).

If you are interested or would like more information please contact **Naz Mohamed**, Early Childhood Coordinator, 253-1919 X 32; mohamedn@shutesburyschool.org Thursdays and Fridays between 8:15am to 3:15pm.

## Family Network reaches out to little ones

Since 1998, the Erving School Union #28 has been funded by a grant from the Massachusetts Department of Education/MA Family Network to provide outreach, education and support services for families with children under 4 years of age living in the towns of Shutesbury, Leverett, Erving, New Salem and Wendell.

We offer weekly story hours at the Shutesbury library and play groups at the school gym; Parent Council meetings; workshops based on assessed families needs; field trips; and frequent fun events for the entire family. We also make Home Visits with our Baby Gift Bags to families with newborns to welcome them into our program.

If you have just moved into Shutesbury, have a child under four years of age, are pregnant or have a newborn, then please call Naz Mohamed-Ahamed at 413-423-3337 or email [mohamed@erving.com](mailto:mohamed@erving.com) to be put on our mailing list.

This is a wonderful way to meet other Family Network families with young children in your and neighboring towns.



## Respite care is a call away

In-home care services from Franklin County Home Care Corporation (FCHCC) give caregivers a break and help keep elders independent in their own homes.

Caregiver grants let caregivers refresh and renew by taking yoga or quilting or woodworking class--anything that lets them do something completely different. Call FCHCC at 413-773-5555 or 978-544-2259.

## FYI: What happens after you get it to the curb?

Blaire Robey, *Recycling Coordinator*

I hope you find this article reprinted from the December 7, 2006 *Boston Globe* as interesting and informative as I did.

### Do you know where your recycling goes?

By Matt Carroll, *Globe Staff*

One day each week, people across the region trudge to the curb carrying big plastic bins full of empty milk jugs, dented dog food cans, glass bottles, and newspapers. Later that day, trash collectors empty the boxes into a recycling truck, which rumbles away, out of sight and out of mind. But where does all that recyclable trash go? Is it really recycled—old milk jugs into new—or does it, in the end, somehow get dumped along with the rest of the trash in some unknown landfill?

Following one family's recycling box contents along this trail reveals that, yes, what's put in your recycle bin really does have a second life down the road. It is made possible by a network of Willy Wonka-style "smart" machines that can be found across the suburban landscape but that most consumers never see. Using a combination of super-magnets, air blasts, high-tech photography, and decidedly low-tech crunchers, these gigantic sorters reduce mountains of our daily garbage into neatly grouped raw materials that end up as, say, a soda bottle in China or a car part in Canada.

There is an increasing amount of recycled trash to feed the process. Between 1990 and 2004, the amount of municipal solid waste recycled in Massachusetts more than tripled—from 10 percent to 35 percent, according to the state Department of Environmental Protection.

The trail of one family's recycling starts on a recent Thursday on Hinckley Road in Milton, where four full recycling bins sat by the side of the road. Two held cans and plastic; two were packed with paper and cardboard.

The bins contain a household's

usual assortment of recyclable flotsam and jetsam: a plastic Mott's apple juice container, a black plastic takeout tray, yogurt containers, innumerable cat food cans, an aluminum tray, and much more.

The material is trucked to a cavernous facility in Avon run by Waste Management Recycle America, a subsidiary of Waste Management Inc., one of many such facilities run by Waste Management or other companies. Two connected warehouses are each big enough to host a Patriots football game, with plenty of room under the ceiling for punts.

The site handles a staggering 350 tons a day of recycled waste, six days a week, from 18 communities, most of them in this area, as well as from businesses. If you live in Avon, Braintree, Dedham, Halifax, Hull, Mansfield, Milton, Norton, Norwood, Plymouth, Stoughton, Walpole, Westwood, or Weymouth, your recyclable trash ends up here.

All but the paper and cardboard is dumped on a mini mountain of recyclable trash. It's a huge, messy mix. Tide detergent bottles rest next to dill-pickle jars. Presumably, the Hinckley Road cat food cans are in there—somewhere. There's surprisingly little smell. Trucks that stink are turned away.

This is the domain of Austin McKnight, the facility manager, a no-nonsense type in a hardhat. He runs the site with a crew of 25 men.

It is here that the marvels of modern machinery are on display for anyone who ventures into McKnight's world. He's been here since the facility opened in September 2001, and he has a keen appreciation of what the machinery can do.

"You have to . . . to do the kind of work we're doing here every day," he said.

Under McKnight's watchful eye, a front-end loader pushes the recyclable trash onto a broad, black conveyor

belt that rattles along at an impressive speed and with considerable noise, carrying trash into the sprawling sorting contraption that fills most of one of the warehouses.

First, powerful magnets hanging above the conveyor cause cans – and anything else made of steel or tin — to fly up off the conveyor belt, as if by wizard magic. They bang hard against the magnet and are pulled overhead and away.

Next, glass containers, most of which have been smashed to pieces by their journey to this point, fall through holes in grates, where they end up in separate bins.

Computer-controlled cameras take pictures of what is left. In an instant, the computer uses the picture to decide what is plastic and what is not. All the waste trundles toward a band of metal studded with holes. As a plastic bottle reaches the metal band, a computer uses the information in the photo to strategically blast jets of air through a select handful of the holes, hurtling the targeted bottle into the air and over a barrier. Now the plastic has been separated.

The machine is about 95 percent accurate, said McKnight.

Aluminum cans are the last sort. An “eddy current,” which is an electric current induced by an alternating magnetic field, separates the aluminum from the waste stream.

What’s left isn’t much — an odd assortment of toys, sometimes black plastic, which is not popular with recyclers, plastic bags, and other non-recyclable items.

The overall recycling rate for everything taken into the facility is about 97 percent, said McKnight. The 3 percent left is compressed and taken to landfills.

Paper and cardboard go through their own conveyor system for sorting. All along the system, men sort by hand, pulling out recyclables that the machine sorted incorrectly.

Once sorted, each recyclable is crushed into a compact cube and stacked throughout the warehouses. (Crushed glass is the exception and is loaded into containers.)

Piles of paper, of many different

grades, sit stacked like so many giant blocks. They can weigh up to 2,400 pounds. Plastics, steel, and aluminum sit in their own piles.

From there, the separated recyclables are shipped out.

Glass stays in Massachusetts, at least for a little while. It goes to a plant in Franklin, where it is separated by color. After that, it is sold to glass manufacturers.

Glass from food and beverage containers can be recycled over and over. About 90 percent of recycled glass is used for new containers, according to the federal government.

Paper can go to paper mills almost anywhere. From this site, most stays in the country, but some is shipped to Canada. Nationally, 81 percent of the paper recovered is recycled in paper mills; 16 percent is exported to foreign markets.

All the plastic from this site goes to North Carolina, where it is sorted by resin type. Recyclable plastics are marked with a number, 1 through 7, which indicates the resin.

Milk and water jugs, which are made of a resin called HDPE, are highly valued, and often end up again as milk jugs. Some are used for flexible pipe or lawn chairs. The foreign markets for resins such as PET, used in soda bottles, is growing and more and more of it ends up in Asian markets, such as China .

Steel cans from this site go to Canada or Pennsylvania . They can be recycled into everything from more cans to automobiles. More than 1,000 facilities across the country make and process steel, with most located in the Great Lakes region or the South.

To feed this process requires individual efforts of the 360,000 households across the region, which each week invest their time and effort at the front end of the recycling process — rinsing out cans, gathering up old newspapers, and hauling it all out to the curb.

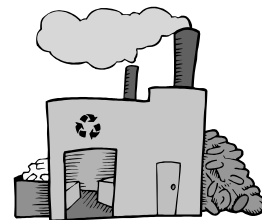
Their effort benefits more than just the environment. The more paper that is recycled, the more money a town saves. And there’s more that can be done.

“When you throw away recy-

clables, you are throwing away money,” said Brooke Nash, a state Department of Environmental Protection branch chief. She stressed that recycling benefits people, towns, and the environment.

If communities recycled the paper products they throw away each year, they could save \$52 million in trash fees they pay, she said, and might even make a few dollars in the bargain.

Paper, especially, is in high demand in countries such as China . Chances are, Nash said, that the cardboard box a new TV comes in this Christmas originally “left the US, went overseas, and was turned into another cardboard box.”



*Broadband, cont. from page 1*  
for broadband for all residents.

Our plan is to invite you, the residents of Leverett and Shutesbury, to attend and share your broadband needs. We hope to have:

a. Students from the regional system speak to the inequality of competition of doing research using dialup and competing with classmates who have broadband.

b. Work-at-home business owners to speak to the difficulty of doing business on dial-up.

c. Residents speak to the difficulty of keeping software current with dialup and any other relevant issues.

d. Town officials to be supportive

e. State elected officials to hear and bring our needs to Boston.

If you are not on our email list already and would like to be, please send an email to weeziehoule@msn.com or call 259-1696.

The committee wishes to continue to thank those who have volunteered their time by sending postal mail, email, and making phone calls in an effort to get broadband to all our town residents.

# The M. N. Spear Memorial Library

10 Cooleyville Road  
259-1213

Jane Buchanan, *Director*

## New hours!

This January, we changed our Monday and Wednesday hours. The new hours are:

Monday and Wednesday  
11:00am to 1:00pm  
3:00pm to 6:00pm.

Other hours remain the same:

Tuesday and Thursday  
3:00pm to 7:30pm  
Sunday  
3:30pm to 5:30pm.

The hours were changed in response to patron requests for more evening hours and for noontime hours.

## Be your library's Valentine. Become involved!

Karen Traub, *Co-Chair, MN Spear Library Board of Trustees*

If you love the library, now is a great time to get involved in shaping its future. You probably know that we now have high speed wireless Internet access (wifi 24/7), an expanded video and magazine collection, fair trade coffee and good chocolate!

Perhaps you know that we are in the process of becoming a mini net member of CWMARS which will mean you can use your CW/MARS card here, as well as access the library's catalog and reference materials, place holds for materials and interlibrary loans from your home computer and allow online access to catalog and interlibrary loans. And maybe you have taken advantage of our increased summer hours or participated in a Friends of the Library event.

We are listening to you! A recent resident survey conducted for the library's Long Range Plan tells us that you want space to sit and read, to be

able to spread out a newspaper, to catch up with neighbors, to study and do research. You want room for a reference collection, to sit at the computers without having to move out of the way of others, a place to sit with your children and read books. Many people see the library as a place to go for cultural enrichment and imagine a place to view art, to listen to speakers, to share poetry and literature, to watch films. Many of you would like a café where you can meet your neighbors and talk about your favorite new book or discuss the issues of the day. Some want a dance space, a yoga space, a place to share ideas and tools.

According to the Shutesbury Master Plan, to meet the needs of our town, the library needs a minimum of 3,600 square feet. The present building has 900 square feet. The Trustees are looking for people to serve on a Library Facility Needs Assessment Committee to look at the space needs of the library. We are currently applying for grant money to explore options for getting more space.

In the meantime, residents have approved making the building handicap accessible and adding a compost-

ing toilet so the present building will continue to be useable. Also, watch for clever changes in the layout of our library that will make it seem bigger.

We thank you for your support and invite you to join us at the level of involvement that's right for you, whether it's shelving books, helping with our website, shoveling snow, participating in Friends events, seeking election as a Trustee, or being appointed to the Library Facility Needs Assessment Committee.

For more info visit the library or the website (<http://shutesbury.org/library/>) or call (259-1213).

## Friends of the Library look back on a great year

Bonnie Adams, *President, Friends of the Library*

Fundraising activities in 2006 included the sale of our very own Dean's Bean's coffees, Roadtown Roast and S-Curve Special.

The Friends' sale of delicious healthful foods at the annual town meeting was enthusiastically supported by both cooks and purchasers.

The spring brought wind and chill for the annual Egg Hunt, which was





held for the first time in the baseball field at the school. Though it was truly miserable weather, many people were on hand to hide eggs. Funny, when the children arrived to look for the eggs, it seemed as if the weather warmed up about 25 degrees.

**Mary Anne Antonellis** and **Jen Dolan** have organized the Egg Hunt for many years, but have decided to pass the torch to other dedicated individuals.

Would you like to be one of those individuals? Thank you Mary Anne and Jen for providing so much fun for the children of our town (and their parents) on so many days which they would probably not be playing outdoors!

Imagine the baseball field filled with children screaming their thanks. I have no doubt they would love to do that for you both.

Another warm fuzzy event held during one of the 35 degree/driving rain weather months was the fly-tying workshop taught by infectiously enthusiastic **Bob Sousa**. Many wooly buggers were crafted along with other types of fishing flies. These fly-tying workshops could qualify for spectator sport status – very interesting, very much fun.

During the fall, a group of Friends began to make a quilt for a later raffle. Currently, the top is nearly all pieced. We look forward to seeing this quilt as a finished product. It is beautiful so far.

As per usual during the summer, the Friends participated in the state-wide Summer Reading Program, What's Buzzing at the Library. Special events included in this program were entomologist-led activities by **Andrea Rogers** (water bugs) and **Suzanne Lyons** (insects of the woods and fields).

Thanks also go to **Roger Tinknell** who donated his services for the end of the program party. Unfortunately, this included racing all equipment into the basement of the Town Hall to avoid a big rainstorm.

The Friends of the Library joined the crew selling coffee, cups, and chocolate chip cookies and many other delicious baked goods at

Celebrate Shutesbury - another event which hastily changed location because of the rain.

We offered chocolate for sale at the library before the holidays. For the first time, fifty pounds of it sold before the New Year. Thank you to **Pam Ososky** for locating a new supplier of chocolate and picking it up for us.

Most recently, the Friends held their Holiday Book Sale & Signing which was generously supported by the World Eye Bookstore. Many people came to meet local authors **Jeannine Atkins**, **Jane Buchanan**, **Leslie Cerrier**, **Sharon Raymond**, **Bob Sousa** and **Ellen Wittlinger**, and illustrator **Michael Chesworth**.

Books by our youngest Shutesbury author, **Alexa Kitchen**, were available too.

Residents enjoyed shopping locally to purchase holiday gift items from Shutesbury talent **Vickie Davey** (photographs), **Susan Essig** (jewelry), **Henasusha** (painted cards/purses), **Edith Hunsberger** (watercolors and cards), **Sterling Lamet** (nature prints), **Maggie** and **Caroline Miklovich** (Solstice Herbals), **Melinda LeLacheur** (Dragonfly Designs eye pillows, etc.), **Sharon Raymond** (handmade shoes), **Susan** and **Steve Rice** (Craigieburn Farm alpaca products), **Jayne Rubenstein** (massage/ornaments), **Linda Scott** (vintage aprons & felt pins), **Owen Williams** (glass).

Music CDs were available from **Tracey Grammer**, **Jim Henry** and **Werner John**. Shutesbury clothing articles and cups were available thanks to **Chris Warren** of Print Associates. All of these people generously donated a portion of their sales at the fair to the Friends.

Again we thank **Carol Lynch** and **David Cormier** for their donation of books for the Holiday Raffle. This year the book theme was Pop-Up Books.

Thanks to all of you who mailed us a check for your Friends dues. Yes, I am working on working on mailing out thank you notes to all of you.

This has been a great year for raising both money and strong supporters of our library.

Special thanks to **Mary Anne**

**Antonellis**, **Liz Armstrong**, **Michelle Babione**, **Grace**, **Rebecca** and **Eliza Bannasch**, **Bill** and **Nancy Buchanan**, **Jessica Buck**, **Jen Davies**, **Jen Dolan**, **David** and **Gudrun Durham**, **Sally Fairfield**, **Stephanie Friedrich**, **Hennasusha**, **Lauren Holt**, **Melinda LeLacheur**, **Amy Mayer**, **Pam Ososky**, **BZ Reily**, **Linda Scott**, **Michele Sedor**, **Dina Stander**, **Karen Traub** (Trustee Liaison to the Friends) and **Jane Urban**, who have all provided their efforts and donations and are participants in all of our events.

See page 1 for news of an upcoming event: **"For the Love of Libraries."**

### *School, cont. from page 5*

environment through research and projects and is a symbol of how our Mission Statement impacts decisions we make. The solar array provides impetus to learn more about renewable energy and grasp a philosophy that encourages choices that sustain or improve our environment and our quality of life.

There have been many improvements to our school web site ([www.shutesburyschool.org](http://www.shutesburyschool.org)) by **Debbie Lee**, our Technology Coordinator and some talented volunteers.

There has also been an effort to improve communication between teachers and parents by establishing an e-mail system, and by asking parents to become more involved on the playground and in the classroom. The school continues to embrace field trips, arts and cultural programming, and school assemblies where children share their work. These activities are woven into the school day to support curriculum, inspire children and expand their horizons.

To paraphrase our new principal **Bob Mahler**, "Our school is a jewel!" We owe it to all of the teachers, staff, administration, the many volunteer groups, individual volunteers and you, the community. The School Committee recognizes and appreciates your continued support. Our children are our future; your investment will have an everlasting return.

# HOW TO CONTACT TOWN OFFICIALS

ACCOUNTANT <i>Gail Weiss</i>	259-1108	ELEMENTARY SCHOOL <i>Robert Mahler, Principal</i>	259-1212	RECREATION & OPEN SPACE COMMITTEE <i>Elizabethann Lacy</i>	259-1764
ADA COMMITTEE <i>Martina Carroll</i>	259-1110	EMERGENCY MANAGEMENT DIR. <i>Walter Tibbetts</i>	259-1211	RECYCLING COORDINATOR <i>Blaire Robey</i>	259-3796
TOWN ADMINISTRATOR <i>David C. Dann</i>	259-1214	FINANCE COMMITTEE <i>Eric Stocker</i>	259-1478	REGIONAL SCHOOL COMMITTEE <i>Marianne Jorgensen</i>	259-1842
ANIMAL INSPECTOR <i>Denise Chiminiello</i>	259-1020	FIRE DEPARTMENT <i>Walter Tibbetts, Chief</i>	259-1211 259-1286	ROADS COMMITTEE <i>Vacant</i>	Call 259-1214
ASSESSORS <i>Kenneth Holmberg</i>	259-3790	HEALTH AGENT <i>David Zarozinski</i>	549-3710	SCHOOL COMMITTEE <i>Daniel Hayes</i>	259-2102
BOARD OF HEALTH <i>William Elliott, Chair</i>	259-2122	HIGHWAY DEPARTMENT <i>Tim Hunting</i>	259-1215	UNION 28 SCHOOL SUPT. <i>Joan Wickman</i>	423-3337
BUILDINGS COMMITTEE <i>Dale Houle</i>	259-1696	HISTORICAL COMMISSION <i>Barbara Goodhind</i>	259-1428	SELECT BOARD <i>Becky Torres, Chair</i>	259-1618
BUILDING INSPECTOR <i>Jim Hawkins</i>	772-2026	M.N. SPEAR MEMORIAL LIBRARY <i>Jane Buchanan, Director</i>	259-1213	<i>Debra Pichanick</i>	367-9550
CEMETERY COMMISSION <i>Marilyn Tibbetts</i>	259-1976	LIBRARY TRUSTEES <i>David Cormier</i>	259-1572	<i>Ralph Armstrong</i>	259-1021
COUNCIL ON AGING <i>Muriel Gross</i>	259-1371	OUR TOWN NEWSLETTER <i>Janis S. Gray</i>	259-1584	SHUTES.-LEV. BROADBAND COMMITTEE <i>Rob Brooks</i>	253-0887
CONSERVATION COMMISSION <i>Leave inquiries at</i>	259-2123	PERSONNEL BOARD <i>Penelope Kim</i>	259-1326	TAX COLLECTOR <i>Ellen McKay</i>	259-1615
CULTURAL COUNCIL <i>Renee A. Richard</i>	259-9296	PLANNING BOARD <i>Deacon Bonnar</i>	259-1276	TOWN CLERK <i>Leslie Bracebridge</i>	259-1204
DEPT. OF VETERAN'S SERVICES <i>Leo J. Parent, Jr.</i>	863-3205	PLUMBING/GAS INSPECTOR <i>John Letourneau</i>	367-0017	TREASURER <i>Gabriele Voelker</i>	259-1801
DOG OFFICER <i>Nancy Long</i>	259-2123	POLICE DEPARTMENT <i>Chief Thomas E. Harding</i>	259-1279	TREE WARDEN <i>Thomas Houston</i>	259-1508
ELECTRICAL INSPECTOR <i>Maurice Gregoire</i>	367-9988	<i>Dispatch</i>	625-8200	WEB COMMITTEE <i>Fred Steinberg</i>	259-9996
		POLICE, FIRE & RESCUE SQUAD	911	ZONING BOARD OF APPEALS <i>Charles J. DiMare</i>	548-9567



TOWN OF SHUTESBURY  
P.O. BOX 276  
SHUTESBURY, MA 01072

**Pancake breakfast  
February 3, 8:00-10:30am!**

Resident  
Shutesbury, MA 01072

PRSR  
U.S. POSTAGE PAID  
PERMIT #5  
SHUTESBURY MA 01072

