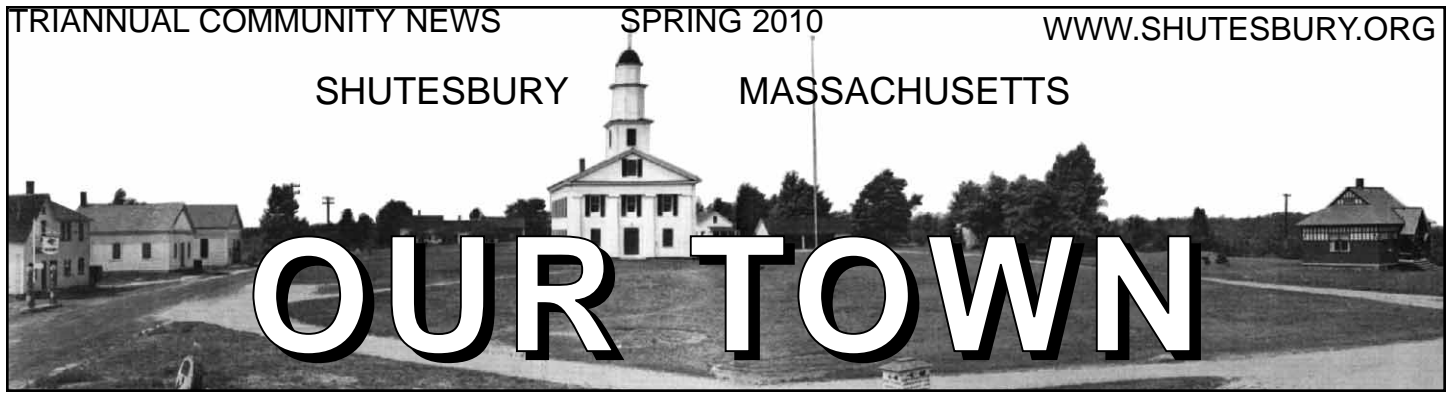


SHUTESBURY

MASSACHUSETTS



OUR TOWN

Got projects? Remember the wetlands!

Penny Jaques, *Shutesbury Conservation Commission*

With the arrival of spring, many in town are starting to think of construction projects—replacing a deck, adding a porch, building a shed.

Each of these projects requires action by the Conservation Commission.

If you have a project in mind, check the newly-revised Conservation Commission webpage:

<http://www.shutesbury.org/concom>.

The page now has links to all of the DEP forms you need, as well as an information packet to guide you in filing.

You can also find the Commission's Wetlands Brochure which will help you understand when and why you need to contact us.

~ ~ ~

Welcome to **Jeff Ragle**, our newest appointed Commissioner. Jeff

Shutesbury's Annual Town Meeting and Election

will take place at the Shutesbury Elementary School, 23 West Pelham Rd., on Saturday, May 1, 2010.

The polls will be open from 8:00am to 2:00pm.

A Special Town Meeting will start at 8:30am.

Annual Town Meeting will start at 9:00am.

Details can be found in inserts in this newsletter and on page 2.

brings our membership to four. We are still seeking a fifth member.

We meet the second and fourth Thursday of each month from March through October and the second Thursday of the month November through February.

If you are interested in learning more about what we do, contact our Clerk, **Linda Avis Scott**, by email at concom@shutesbury.org or by calling 413-259-3792 to set a time to visit one of our Commission meetings.

Library project, grant application topics of Town Meeting warrant

The Library Needs Assessment Committee (LFNAC) has worked through many floor plans and concepts to arrive at the design it will bring to voters at our Annual Town Meeting.

On Monday, April 26, at 7:00pm at Shutesbury Elementary School, LFNAC and the architects will host a community forum to present the plans and additional information on the project.

On Saturday, May 1, a warrant article is to be presented at town meeting to ask the town's permission to apply for, accept, and expend a Library Construction Grant from the Massachusetts Board of Library Commissioners.

See page 8 of this newsletter for more background and a timeline on efforts to build a new library to serve our town.

A logo and slogan for our upcoming birthday party

Janis Gray, *Co-chair, 250th Anniversary Steering Committee*

A design by **Stephen Ervin** and a slogan distilled from a number of similar sentiments will adorn posters, flyers, signs, programs and commemorative items in 2011.

That's when "Roadtown," founded in 1735, will observe the 250th anniversary of its official incorporation as Shutesbury.

The 250th Anniversary Steering Committee hopes to have drinking glasses and caps bearing the logo and slogan available at the May 1,

2010 Annual Town Meeting.

Our call for ideas last August resulted in 78 suggestions for slogans, most penned anonymously on posterboard mounted for this purpose at Celebrate Shutesbury and at the library, post office, Athletic Club and town hall. Many referred to the town's elevation -- which happens to also make Shutesbury cooler in temperature than towns in the valley. Four separate, but similar, slogans pointed

out this meteorological phenomenon (the committee formally disavows awareness of other interpretations).

This spring, we chose a design by Ervin, a landowner and seasonal

See 250th, continued on page 5



Messages from the Town Clerk

Leslie Bracebridge, *Town Clerk*
Joan Hanson, *Assistant Town Clerk*
Office Hours: Monday through
Thursday 9:00am –1:00pm
Call 259-1204 for special
appointments or to leave a message.

Saturday, April 10 was the last day to register to vote for the May 1 Annual Town Meeting and Election.

Once registered to vote in a Massachusetts town, as long as the voter remains at the same address and continues to fill out and return the January 1 annual street list form, the voter's name remains on the voter registration list. Call the number above anytime if you would like to check your voter registration status in Shutesbury.

Absentee ballots are available at the Town Clerk's Office for voters who will either be absent from Shutesbury, or who have a physical disability or a religious belief that prevents them from being present during polling hours.

Applications for absentee ballots must be made in writing and include: the voter's name, voting address and the address to which the ballot should be mailed, and the voter's signature. Please allow plenty of time for mail delivery of an application and the ballot back and forth.

A voter may also absentee vote in person at the Town Clerk's office until noon on Friday, April 30. For any questions about absentee voting including hours, please call the Town Clerk's office.

The only way to **vote on the Town Meeting warrant articles** is to be at the meeting. We hope you will be able to attend.

Key results of both the election and town meeting will be put on the Town Clerk's answering machine (259-1204) and posted on the front door of town hall at the end of the day. As soon as first draft results are prepared, they will be posted at the town website (www.shutesbury.org.)

Positions that will be on the May 1 ballot

due to term expirations:

Board of Health	1 three-year position
Cemetery Commission	1 three-year position
Constable position	1 one-year
Board of Library Trustees	2 three-year positions
	1 one-year position (due to a resignation)
Moderator	1 three-year position
Planning Board	2 three-year positions
School Committee	1 three-year position
Board of Selectmen	1 three-year position.

You should have received a US Census 2010 form by now. If you did not receive a form, please call 1-866-872-6868. During the initial census collection period we were given multiple ways to contact US Census 2010. As they finish their follow-up work, we have been advised to stick with this one universal number. We appreciate your efforts to be counted. If you need any assistance, please feel welcome to call our office.

We always appreciate how responsive and helpful Shutesbury residents are with our local census. We wish that we could just give the US Census 2010 takers our local census information, but the federal census is conducted in ways generalized to meet the needs of the entire country. We are asked to do the best that we can to help make sure that all of our residents are counted by the federal census system.

It is very important for our town and our state that there be an accurate count of the residents of Shutesbury. Thank you for your efforts.

With its basis in Massachusetts statute, **all dogs residing in the Town of Shutesbury must be licensed** annually. Besides providing valuable contact information in the event that a pet is lost, licensing insures that all dogs are vaccinated against rabies.

You can re-license your dog any time now for the July 1, 2010 - June 30, 2011 period. You can print out a re-license form from our www.shutesbury.org website. If there is a town-wide mailing in June, we will include mail-in relicense forms in it. Check

now, to make sure that you have a current certificate of rabies vaccination for your dog. If the certificate has expired, call your veterinarian for an appointment to be ready for the July relicensing period.

Please feel welcome to call the Town Clerk's Office if you would like more information.

Applause for this winter's timely quintet!

In January 2010, **Suzanne Hayden, Susan Millinger, Penelope Kim, Marilyn Tibbetts** and **Walter Tibbetts** helped town officials prepare the 875 copies of the Winter *Our Town* newsletter for delivery to the Post Office.

If you would like to join one of the lively *Our Town* "folding parties" in the future, please call the Town Clerk's office at 259-1204 to be added to the list of people to call.

Our Town also appreciates the town's Web Committee for posting each issue of the newsletter at www.shutesbury.org.

Our Town, published three times a year in January, April and August or September, is supported by tax dollars. We welcome news from Town of Shutesbury departments, boards, and committees, and from individuals and groups about local projects, activities, or special events of benefit to our community. Submissions promoting the sale of goods or services for private profit cannot be accepted.

Janis S. Gray, *Editor*
Leslie Bracebridge, *Town Hall Liaison*



PRINTED ON RECYCLED STOCK
30% POST CONSUMER WASTE

Note from the Town Collector

Dear Shutesbury taxpayers,

Happy spring! Now that the warmer weather is approaching, we are approaching the end of fiscal 2010 and the Town Meeting for fiscal 2011.

My office hours are Monday, Tuesday, and Friday from 9:00am – Noon and Wednesday from 8:00 –11:00am. Should you need to see me and these times are inconvenient, please call and we can arrange a better time to meet.

Your **fourth quarter real estate taxes** are due May 1. I urge you to pay these bills promptly as the next bill you will be receiving on these bills is a demand that will cost you an additional \$ 5.00 plus interest.

If you need to **set up a payment arrangement on your bill**, please contact me as soon as possible. Although interest will accrue on any overdue portion of the bill, you will avoid the demand fee and the additional interest that would accrue should you leave the entire bill unpaid.

Don't forget to contact the Board of Assessors if you no longer have a vehicle on which you have received a **motor vehicle excise tax bill**.

This should be done as soon as you receive the bill so the bill can be adjusted through abatement before the bill becomes due. Unless the bill is fully abated, any fees and interest that accrue prior to your payment must be paid.

You will need to supply the Assessors with a bill of sale and a copy of a plate return receipt from the Registry of Motor Vehicles or a copy of a new registration for the same license plate to obtain the abatement.

Have a good spring.

News from the Historical Commission

As in past years, our Historical Commission will be represented in the annual **Quabbin Park Memorial Day Parade**: Sunday, May 30 at the

Education Study Committee seeks community members

Becky Torres, *Town Administrator*

The Selectboard and School Committee have jointly created an Education Study Committee. The charge of this special-purpose committee is "to engage in the reflection of educational goals and to explore options for the school-aged children of our town."

There will be nine members. Three members will be drawn from the community: one a parent of pre-K – 12th-grade child(ren), and two non-school-parent Shutesbury residents.

A candidate will need to be available for evening meetings. The committee will determine the schedule.

We are looking for people willing

to actively participate in the process, which includes gathering and processing data and presenting findings to various committees in public forums.

[See section headed "Education reform" in related article, page 4.]

Letters of interest for these three positions should be sent to the Town Administrator, 1 Cooleyville Rd., Shutesbury, or turned in at Town Meeting or at the Town Hall. Please include your name, email, address, phone number and a short statement of interest.

The Selectboard and School Committee will review candidates and agree on these appointments jointly on May 4, 2010.

Quabbin Park Cemetery on Route 9 in Belchertown. Refreshments and coffee will be served at 10:00am, the parade will begin at 11:00am and the ceremony will be at 11:15am. All are welcome and there is no charge to witness this meaningful event in a tranquil historical cemetery.

If you have any questions about our local history, would like to participate in our walks, or donate time to help with document preservation, please contact Leslie Bracebridge, Town Clerk, 259-1204, townclerk@shutesbury.org.

Also, the Historical Commission would love to hear from you if you have a history story to tell, an old Shutesbury object that we could photograph, a historic site that we could see, or photos or documents about our past that we could copy for our files. Please contact any member of the Shutesbury Historical Commission: Chairman **Barbara Goodhind**, Secretary **Julie Taylor** and members **Leslie Bracebridge**, **Karen Czerwonka**, **Joanna Hayes** and **Marilyn Tibbetts**.

Shutesbury market to begin third season

Local farmers and craftspersons will return to the lawn behind Town Hall on Saturday, May 22. The hours each Saturday will be 8:30am –Noon. The market welcomes musicians and

entertainers who would like to get public exposure (without compensation). Contact **Becky Torres**, 259-1214, if interested.

When the market first opened in 2008, **Mary Lou Ferro** was inspired by the vendors setting up to write "Dreams and Skies, later published in *Our Town*. We recently learned it was selected by the Massachusetts State Poetry Society for its 2009 Anthology, *WORDSMITHS*.

Dreams and Skies
copyright by Mary Lou Ferro

As we gather on back lawns
Mowed straight and green
And spread out our wares
On tables that seem
Just long enough sideways to hold
fruits of our dreams,

We wait....

And all the while smiling
Accepting, exchanging,
Anticipating, the next passerby

We wait...

And now the skies open, the sun
shining through,
And day's break comes blistering as
always with dew,
For all we spread forward is meant
now for you,
To taste sweet, to look good, to smell
fresh (and) sound
(So) as you leave plenty and head
homeward bound, May you look upon
dreamers, with grace anew found.

Education: Much in motion

Michael DeChiara, *Chair, School Committee*

Much is happening in education in Massachusetts and nationally. There is also a lot that has happened this school year regarding education for Shutesbury.

What's happening at school:

Shutesbury Elementary has been an active place this school year and despite the fiscal challenges, it has remained a vibrant learning environment. Our school's success in providing quality education is due to the commitment and ability of our teachers, administrators and the many volunteers who create a rich experience for the kids.

This winter a week-long Visiting Artist in Residence program on African Dance and Drumming (paid for with PTO funds) was offered to all kids in the school.

In January, the 5th and 6th grades held a first-ever math night to share what they've learned in math; they wowed parents/guardians with approaches to problem-solving that most of the adults found novel and impressive. Math nights were also held for families of other grades, with staff explaining how math is taught at SES.

In March, the 5/6 science fair was held; the younger grades will have their science fair later this spring.

An annual event that promotes reading among grades 4, 5 and 6 is the Mass. Children Book Award program; this year 51 of the 59 eligible students read five or more books, 15 read all 25 books, culminating in projects and multi-school celebration.

Also in terms of reading, an outside review of the school's reading program is under way to help staff evaluate the effectiveness of our ELA curriculum and point to necessary professional development to keep the them up to date on best practices.

Finally, field trips are planned for this spring to provide additional experiences for students; although these are more modest due to funding limitations, they are still happening!

The School Committee will soon

begin exploring ways to share what is happening at the elementary school with the broader Shutesbury community. Any ideas, please contact **Clif Read**.

At the Region, a long-awaited review of the middle school was completed and presented to the Regional School Committee. It was an encouraging report—documenting the strengths and identifying areas for improvement. The report can be found at the ARPS website.

Personnel:

At the Elementary School, personnel are somewhat stable.

Fifth grade teacher **Matt Goldman** has returned from parental leave after the birth of his first child. First grade teacher **Sarah Willis** will be on maternity leave next school year.

Principal **Bob Mahler** has had his contract extended through June 2011; he will be entering into negotiations with the Superintendent regarding a multi-year contract this June for service starting July 2011.

At the Amherst Region, there has been a change of leadership.

Superintendent **Alberto Rodriguez** resigned after eight months in the position; he has been replaced by **Maria Geryk**, who will serve as Interim-Superintendent until end of next school year (June 2011). Ms. Geryk served as interim last year after the premature departure of the previous interim superintendent, and is therefore familiar with the job and the school district.

Michael C. Hayes, who had been assistant principal at the Middle School, has been appointed as its permanent principal.

The budget:

In terms of finances, there is the proverbial good news/bad news. The good news is that quality education for Shutesbury children remains intact despite the many pressures from the economy.

The bad news is that cuts are being made for next year—responsibly and strategically—but cuts nonetheless. Overall, steps have been taken to account for the reduction in

state funding while still maintaining and protecting the quality of education at Shutesbury Elementary and the Amherst Regional Middle and High Schools.

Specifically, the hard work of the administration and school staff has enabled the Shutesbury School Committee to pass a 0% budget (no increase in bottom line from last year) with the hope that eventually things will turn around.

At the Region, the recent Amherst override will reduce the depth of the cuts, hopefully retaining the overall integrity of the middle and high schools.

It is worth noting that the elementary school is doing its part to generate income to preserve programming. The preschool program, the after-school program and the food program have all generated income this year that has been used to fill needs that the town-funded budget couldn't cover due to reductions.

For example, the afterschool program purchased outdoor equipment that is now used by the entire school; the preschool program is using tuition-generated funds to directly fill gaps in next year's school budget.

Education reform:

One big development this winter was the passage of an Education Reform law in Massachusetts which focused primarily on being eligible for new federal funds.

While there are numerous controversial aspects of the law, there is one immediately relevant outcome for Shutesbury.

With passage of the legislation, towns that participate in Superintendency Unions (which Shutesbury does), can now choose to withdraw from the Union by vote of the School Committee; previously there were no guidelines for doing so.

While this ability does not mean a quick or impending change will occur, it enables the town to consider how best to meet its educational goals and, for the first time, have the ability to follow through on any recommendations.

See Schools, continued on page 5

Schools, continued from page 4

In March, the Select Board and School Committee jointly created a Shutesbury Education Study Committee to reflect on the educational goals for our preK-12 children and to develop a recommendation/plan to meet those goals. The committee will have representation from town committees, school stakeholders and three community members, to be determined. The committee will likely meet in late spring/summer. (If you are interested please see the process outlined by Town Administrator on page 3 of this newsletter.)

This reflection process will include public exchange at forums in order to gather input. The School Committee will also seek to provide information as the process moves forward. This has been designed to be a thoughtful and intentional undertaking. The hope is that the process will help our town clarify how best to meet the educational, financial and governance needs of Shutesbury in the moderate and long-term.

The School Committee usually meets the 3rd Thursday of each month. Members of the community are always welcome. Thank you for the community's continued support of quality education for Shutesbury children.



250th, continued from page 1

resident here since 1978, when he was a graduate student at UMass, studying landscape architecture.

He currently works at Harvard University, Graduate School of Design. He tells us he takes a dip in the "Cascades" every summer; and enjoys graphic design and illustration.

Thanks to everyone who contributed ideas—and especially to the artists who took the time to develop one just one, but in some cases multiple variations of their logo themes.

There's a lot of talent, energy and enthusiasm in our town . . . and yes, we'll call that "cool."

Shutesbury Early Childhood Program

The Shutesbury Elementary School Community (SES)) believes that opportunities for early childhood education are essential components of a good education system. Early experiences in an environment rich in hands-on materials and activities provide children various opportunities to grow emotionally, socially and cognitively.

We believe that a trans-disciplinary team approach, in which all adults working with children are responsible for a child's learning, is the most effective way of teaching. We also believe that parents are the most

important teachers of their children and that their involvement in their child's education is essential.

Our Early Childhood Program is accredited by the National Association for the Education of Young Children (NAEYC), which is a mark of a high quality program for young children.

PRESCHOOL ENROLLMENT FOR THE FALL OF 2010 - Please get in touch with us as soon as possible.

Our preschool serves 3 and 4 year old children. Your child must be three years old on or before September 1st, 2010.

For more information, please call:
Grace Griecci
413-259-1212x14
grieccg@shutesbury school.org

**Union #28
Community Network for Children**

The Community Network for Children (CNC) is a program that is funded by a grant from the Massachusetts Department of Early Education and Care. The CNC supports all families with children from birth through age eight and the early education and care and school age providers that care for them in our communities (Erving, Leverett, New Salem, Shutesbury, Wendell) within the Union #28 school system.

Some programs for families include: weekly playgroups and story hours, parent/guardian workshops and events, opportunities to meet other families in our community, support in accessing child care, new baby gift bags and home visits, and newsletters with current programs and events.

Our local CNC council assists in the oversight of the grant funds and program planning. If you are interested in being on our mailing list to receive monthly newsletters of events and workshops, please call or email Gillian Budine, Coordinator, (413) 423-3180. You can also access information at our website: <http://sites.google.com/site/communitynetworkforchildren/>

Union #28 Community Network for Children
28 Northfield Road, Erving
(413) 423-3180
Coordinator, Gillian Budine
Budine@erving.com



Redeem coupon for a Welcome Baby Gift Bag!

We would like to extend a welcome to your new baby with a free Welcome Baby Gift Bag. Your bag will contain books, health and safety items and valuable information about local services for you and your new baby.

Please call or email Gillian, CNC Coordinator, to arrange for a drop off at your home or to pick up your welcome baby gift bag at one of our local story hours or playgroups!



Update on Fire Station gasoline leak

Becky Torres, *Town Administrator*

On April 8, two Department of Environmental Protection (DEP) officials and our Licensed Site Professional (LSP) spent the day testing theories and tracking the trail of our old leaky underground gas tank.

Fire Chief **Walter Tibbetts**, Selectman **Al Springer**, and I spent the day assisting where we could, taking photos, moving vehicles, sharing knowledge and history, and answering questions. Highway Superintendent **Tim Hunting** manned the backhoe, digging five trenches, the longest about 65 feet.

The first trench was along the edge of the parking lot. It was presumed we would intersect a north south plume of contaminated soil. The hole was clean and then bingo! We cut right through the old waterline. Water blasted from the line. It was quickly turned off.

The hometown crew scrambled with parts assistance from Finance Committee member **Rus Wilson**. In no time the problem was solved.

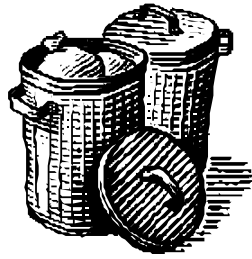
The second trench along the west parking area had high readings of gasoline at lower and lower depths. The smell of gas was strong, emitting from battle-ship gray soil.

Our LSP recorded the position, depth and reading of each sample. He used an instrument called a PID, a photo ionization detector, which detects vapors in the soil. Dozens of these tests were performed. Three more trenches were dug between the building and the western trench. High readings appeared near the building.

The good news is the air quality, and soil gas tests in the fire station have tested at levels of no concern.

All through the day new observations led to more questions.

Early assumptions were proven wrong and I heard from DEP officials with extensive "brownfields" experience that what they saw did not lead to simple conclusions. They will review the data and meet with our LSP to piece this puzzle together and come up with the best solution.



Trash Talk: More bags, heavier bags

Gary Bernhard, *Recycling Coordinator*

From December to May, when trash bag distribution begins again, the Town sells a lot of bags at \$20 a 10-pack. Every household gets up to 50 bags a year, and I know many people in Town who use only 30 or 40.

Others use many more—and pay for them—and I began to wonder why. Are they just not recycling? Do they have very large families?

In talking to people who buy additional trash bags, the folks who sell them at Town Hall learned that two common reasons for people needing more bags seem to be disposable diapers and cat litter.

Last week I had an interesting conversation with one of the drivers who pick up our trash and recycling on Wednesdays. He said that a high percentage of Shutesbury trash bags are heavier than the 35-pound maximum stipulated in our contract with Duseau Trucking and he might have to start rejecting them.

"Let me guess," I asked, "disposable diapers and cat litter?"

"That's it," he said. I thought about what a Shutesbury resident would have to do to make a rejected bag of disposal diapers weigh less than 35 pounds the following week.

Disposal diapers are great, they really are. They're so convenient. But they're terrible for the environment. Landfills all over the world are packed with disposable diapers, and it will take more than 500 years for them to decompose.

And, of course, a trash bag full of used disposal diapers is very heavy. I will confess that we used disposable diapers when our kids were babies, but if I had it to do over again I would use a diaper service at home and use

disposables only when traveling. I know of only one diaper service that serves Shutesbury. Find more here: www.changinghabits.com/index.htm

There is a clear alternative to disposable diapers, but what do we do with the stuff that comes out of the litter box. When we had a cat, an ongoing discussion at our house was what to do with the cat litter.

"Throw it in the woods," I said.

"No," my wife said. "Dogs get into it. Put it in the trash."

I was wrong. There's a parasite in cat feces that can spread to all mammals, including humans. Besides, the kind of clay used in most litters isn't biodegradable. It's not a good idea to throw it in the woods. But it killed me to see all that stuff go into the trash, and sometimes, yes, our bags might have weighed more than 35 pounds.

Then I learned that clumping clay litter isn't even good for the cats who use it. It can cause serious digestive problems. So, cat litter spreads disease, is bad for the environment, can actually harm cats, and makes bags of trash heavier than the Town's hauling contract allows.

There are litters made of corn cobs, wood chips, or recycled newspaper that are biodegradable, and probably lighter, than the clumping clay litters most cat owners use today. Find out more about these alternatives here: <http://thelighthouseonline.com/articles/natural.html>.

You folks who are buying additional bags each year because you have babies, cats or both may be able to save some money by exploring alternatives. In addition, you'll help the environment, make life easier for our Duseau drivers, and avoid unpleasant trash rejections.

~ ~ ~

If you have questions about recycling or would like help setting up an efficient recycling system at home, contact **Gary Bernhard**, Recycling Coordinator, at recycling@shutesbury.org or 259-1235, or contact another member of the Recycling Committee (**Meryl Mandell**, **Steve Rice**, **Gail Fleischaker**, **Paul Vlach**, **Nancy Dihlmann**, **Mino Caulton**, **Ron Essig**, **Karen Czerwonka**).

Concerned about our economic and energy security?

Join a conversation about what it will take for Shutesbury to become a more resilient town.

The Transition Towns initiative began when people in a small town, Totnes, UK, started talking about how to prepare their community to "transition" through global economic and energy changes.

It starts with conversations to which every town resident is invited to discuss how to develop town sustainability in food, water, shelter, energy, transportation, communications, waste management, and more. Transition Towns exist in many countries, including several thousand towns in the US.

Join us on May 12, Wednesday, 7:00 - 9:00pm at Sirius Community Room, Baker Road. to view and discuss the movie "In Transition." All are welcome. Donations accepted. (Come at 6:00pm for Hearthstone Kitchen Meal for \$10—RSVP to mara.khahn@gmail.com by Monday, May 10, to join the meal).

Can't attend May 12? View the film on line at <http://vimeo.com/8029815>.

On May 20, Thursday, 7:00 - 9:00pm at Shutesbury Town Hall. Tina Clarke, Transition Towns trainer for Northeast US, will share examples of Transition towns from around New England and answer questions.

For more information, call **Steve Rice**, 253-4485

Franklin Regional Transportation Plan seeks your ideas

The Franklin Regional Council of Governments (FRCOG) has created a survey to help obtain public input about transportation in the region.

The Regional Transportation Plan, last updated in 2007, reviews current transportation infrastructure in the region and makes recommendations for the future.

Many parts of the transportation network are reviewed and discussed

in the plan, including roadways, passenger rail, freight transport, airports, bus services, sidewalks, and on-road and off-road bike routes.

The survey is online at www.frocg.org, under "What's New." It can also be available in hard copy at town halls and libraries, on FRTA buses, and upon request.

A draft version of the updated plan will be released for public review later this year.



Another way to plan for a better future

The Commonwealth's "Embrace Your Future" campaign is targeted towards people age 45-60. It provides free information about long-term care planning, including healthy aging and lifestyle planning, types of long-term care, legal matters related to long-term care, financial aspects of long-term care, information for caregivers and more.

Franklin County Home Care has a limited supply of free materials including a general informational pamphlet about the campaign and a long-term care planning workbook with CD.

Franklin County Home Care has also listed relevant resources on its website, www.fchcc.org under "Resources and Links." People can contact Franklin County Home Care for their free copies at info@fchcc.org or 413-773-5555 or 978-544-2259.

Fundraising walk for Meals on Wheels program May 1

Franklin County Home Care Corp. invites residents to donate to a walking team or make a general donation to Meals on Wheels by visiting www.fchcc.org. Or mail your donation to Meals on Wheels, 330 Montague City Rd., Turners Falls, MA 01376

Pine Brook to have day and overnight camps

A non-profit, non-denominational Christian camp at Lake Wyola, Pine Brook Camp and Conference Center, is offering this summer:

Day Camp sessions for ages 6-11
Junior Camp for ages 7-12
Teen Camp for ages 12-18

The camp is at 210 Lakeview Road, Shutesbury. For dates and other details, call 413-367-2643, email office@pinebrookcamp.org or visit www.pinebrookcamp.org

New community portal: ShutesburyMA.net

Michael Muller, a Montague web developer, invites Shutesbury residents to look at www.ShutesburyMA.net, which he describes as "a free and open website" where people can post their announcements, events, photos, and other listings.

This independent website is not the official Town of Shutesbury website, www.shutesbury.org, nor is the publication of this announcement in *Our Town* an endorsement of the site.

"There is no fee, and everyone is invited to sign up," Muller writes. "Local venues and clubs are encouraged to post their events."

Bereavement support available

Hospice of Franklin County offers free eight-week support groups for people who have experienced the death of a loved one. Openings are still available in two groups in Greenfield this spring:

Bereavement Support Group, Tuesdays, April 27-June 22, 6:30-8:00pm

Loss of Sibling, Thursdays, May 6-June 24 5:30-7:00pm

A brief phone interview is all that is necessary to get started. It's recommended that the loss be at least three months before taking part.

Call Judy Allen, Bereavement Coordinator, at 413-774-2400.

The M. N. Spear Memorial Library

10 Cooleyville Road
259-1213; www.mnspear.org
Mary Anne Antonellis, *Director*

Hours

Monday and Wednesday

11:00am to 1:00pm

3:00pm to 6:00pm.

Tuesday and Thursday

3:00pm to 7:30pm

Saturday 10:00am to 12:00pm

Sunday 3:30pm to 5:30pm.

Weezie Houle maintains our website.
Thank you! Thank you!

1902

Mary Anne Antonellis, *Director, M. N. Spear Memorial Library*

A couple of weeks ago, on a sunny morning after a heavy rainstorm, Town Clerk, **Leslie Bracebridge** called me and asked if I had ever seen the 1902 on the roof of the library building.

I had heard rumors and imagined the numbers etched into one tile. Instead the numbers are formed by darker slate tiles. The numbers are large and they are located on the front of the building. Look for 1902 after a heavy rainstorm.

* 1902 was 108 years ago. According to the US Census completed in 1900, the population of Shutesbury was 382. The current population of Shutesbury is 1,800. Our population has grown considerably since 1902 and it is likely to continue to grow.

While the collection housed in the Spear Library has grown from 2,500 items then to 11,500 items now, the size of the building has remained the same.

* At Annual Town Meeting in May, 2007, the residents of Shutesbury approved an article that provided matching funds for a planning and design grant from the Massachusetts Board of Library Commissioners (MBLC). Later that summer the LFNAC (Library Facility Needs



Assessment Committee) was formed to assess our current library facility along with the library needs of the town.

* The committee's charge continued with the development of a building program, which is a document that describes a library facility that meets the needs of our community for the next 20 years and beyond.

* The Library Building Program is posted on the library website, www.mnspear.org.

* In May, 2009, an Owner's Project Manager (OPM) was hired to assist the LFNAC in the designer selection process. Our OPM is **Mark Sullivan** of D.A. Sullivan & Sons, Inc.

D. A. Sullivan & Sons is a General Contracting Firm that has been in business for more than 100 years. Coincidentally, D.A. Sullivan was the General Contractor for the Spear Library building in 1902.

* In October, 2009, **Matt Oudens** and **Conrad Eilo** of Oudens Eilo Architecture were hired to help choose a suitable site and create a schematic design of a new library for Shutesbury.

* Two town-owned sites were investigated. Lot 032, which is on Leverett Road across from the Highway Department was chosen over land behind Town Hall.

* In December 2009, the architects began working on the design for a new library. The LFNAC has been working closely with the architects, commenting on and refining a schematic design for a new library, based on the specifications outlined in our Library Building Program.

* A community forum is planned for Monday, April 26, at 7:00pm at Shutesbury Elementary School. Our community will have the opportunity to review the schematic design and learn more about this project.

* At Town Meeting on Saturday, May 1 there will be an article on the warrant asking for permission to apply for, accept, and expend a Library Construction Grant from the MBLC. Come to the Public Forum on April 26th to learn more about this exciting project.

You can be involved in helping to create a new library that will serve the residents of Shutesbury for many years to come. Come to Town Meeting on Saturday, May 1.

Find a treat at our Town Meeting café!

The Friends of the Library will be serving up breakfast and lunch at Town Meeting. Donations of muffins, scones, bagels, donuts, sandwiches and desserts are needed. Thanks for supporting the library by supporting the Friends!

Library now a “social networking site” in yet another way

Library volunteer **Molly Moss** has created a Facebook page for our library. It will be updated regularly with information about library programs and materials. Find us on Facebook and be a fan!

Monthly Movie Night

The Friends of the Library show a movie at Town Hall on the first Saturday of each month. Titles will be posted on www.mnspear.org and on our Facebook page.

GPS scavenger hunt for kids and adults May 16

Come to the parking area at Lake Wyola State Park at 1:00pm and join us for three hours of fun, exercise and learning! Great for families and friends! GPS units available to the first 10 groups to sign up (groups of 2-6). There will be a tutorial in how to utilize the GPS units before the Scavenger Hunt begins. The goal of each small group will be to:

- Find as many hidden medallions as possible with the GPS units provided and the associated clues.
- Solve Riddles, Puzzles & Historic Shutesbury Trivia

Pre-registration is required; call the library at 259-1213.

This event is facilitated by Shutesbury resident **James McNaughton**. This program is supported in part by a grant from the Shutesbury Cultural Council.



The Pre-K students at Shutesbury Elementary School took a field trip to the Town Common on April 14. They visited the Post Office, Town Hall, and the M. N. Spear Memorial Library—where Mary Anne Antonellis (above) enthralled them with poetry and two stories. *(Photo by Grace Griecci)*

Relax and read in the sun

Congratulations to the Friends of the Library for being the highest bidder on the picnic table at the Shutesbury

Elementary School Benefit Auction.

The eight-foot-long picnic table was made for the auction by Shutesbury's own **Jeremy Kellogg** with local wood!

Looking for another fun family weekend event?

Join the Lake Wyola Association Road Race & Walk. On Sunday, June 13 the Lake Wyola Association is holding its annual race and walk that consists of a beautiful 4.8 mile loop around the lake. T-shirts to the first 100 entrants plus cash bonus for the top finishers and a raffle for all entrants. This is the 30th anniversary of the race, so it's sure to be good!

The walk starts at 10:00am and the run starts at 10:30am. Cost is \$16 for pre-registrations. For more information and registration forms, please visit www.lakewyola.com/roadrace/

We're also looking for volunteers and business sponsors. If you want to get involved in this great event or want more information please call **Bruce Hartley** at 413-367-2068 or email LakeWyolaRoadRace@gmail.com.

Summer is coming to Lake Wyola!

The Lake Wyola Association is gearing up for Summer 2010 with the traditional events. Please come and enjoy them with us.

June 13: Lake Wyola Road Race (see related article)

June 20: Father's Day Pancake Breakfast 8:00-10:30am \$5 adults/\$3 kids

July 10: Steak Roast and Chicken BBQ and Dance: 5:00-7:00pm \$15/\$10/ \$5 dance

July 31: Beer and Wine Tasting Festival 5:00-11:00pm \$15 Rain or Shine

August 8: Car Show 10:00-2:00pm

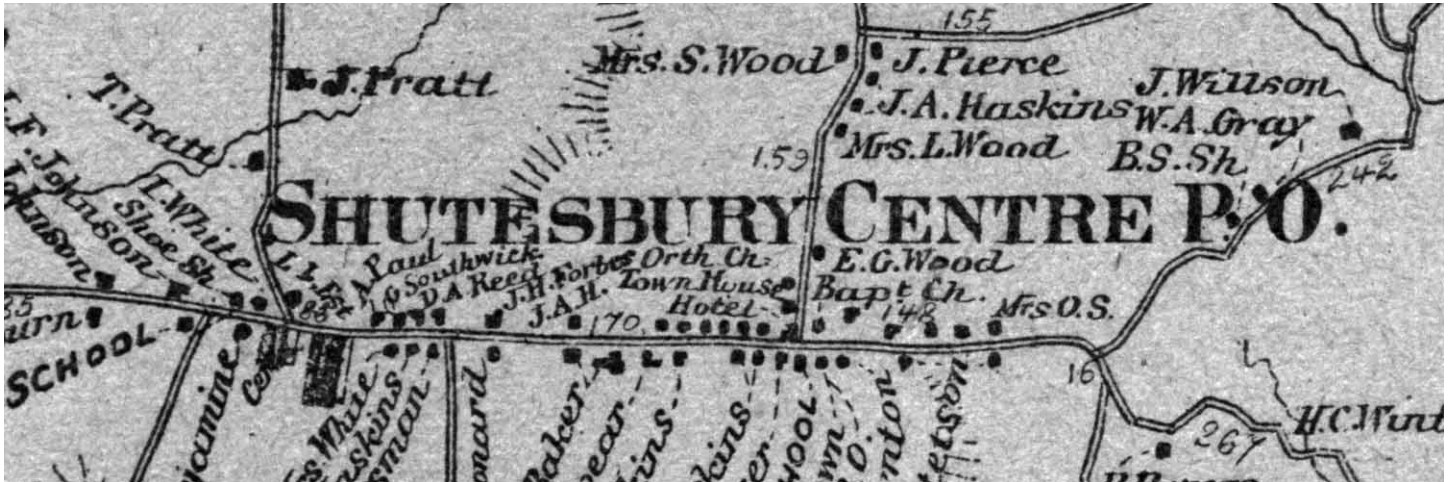


TOWN OF SHUTESBURY
 P.O. BOX 276
 SHUTESBURY, MA 01072

PRSR
 U.S. POSTAGE PAID
 PERMIT #5
 SHUTESBURY MA 01072

**Town meeting
 warrant inside!**

Resident
 Shutesbury, MA 01072



HOW TO CONTACT TOWN OFFICIALS

ACCOUNTANT <i>Gail Weiss</i>	259-1108	ELEMENTARY SCHOOL <i>Robert Mahler, Principal</i>	259-1212	RECREATION COMMITTEE <i>Vacant</i>	Call 259-1214
ADA COMMITTEE <i>Martina Carroll</i>	259-1110	EMERGENCY MANAGEMENT DIRECTOR <i>Walter Tibbetts</i>	259-1211	RECYCLING COORDINATOR <i>Gary Bernhard</i>	259-1235
TOWN ADMINISTRATOR <i>Rebecca Torres</i>	259-1214	FINANCE COMMITTEE <i>Patrick J. Callahan</i>	259-1584	REGIONAL SCHOOL COMMITTEE <i>Kristen Luschen</i>	256-3303
ANIMAL INSPECTORS <i>Denise Chiminiello</i>	259-1020	FIRE DEPARTMENT <i>Walter Tibbetts, Chief</i>	259-1211	ROADS COMMITTEE <i>Vacant</i>	Call 259-1214
	259-2123	<i>or home</i>	259-1286	SCHOOL COMMITTEE <i>Michael DeChiara</i>	259-1059
ASSESSORS <i>Kenneth Holmberg</i>	259-3790	HEALTH AGENT <i>David Zarozinski</i>	549-3710	UNION 28 SCHOOL SUPT. <i>Joan Wickman</i>	423-3337
BOARD OF HEALTH <i>William Elliott</i>	259-2122	HIGHWAY DEPARTMENT <i>Tim Hunting</i>	259-1215	SELECT BOARD <i>Elaine Puleo, Chair</i>	259-1979
<i>Public health emergency</i>	413 659-7294	HISTORICAL COMMISSION <i>Barbara Goodhind</i>	259-1428	<i>Al Springer</i>	259-1578
BUILDINGS COMMITTEE <i>Dale Houle</i>	259-1696	M.N. SPEAR MEMORIAL LIBRARY <i>Mary Anne Antonellis, Dir.</i>	259-1213	<i>J. April Stein</i>	259-1074
BUILDING INSPECTOR <i>Jim Hawkins</i>	772-2026	LIBRARY TRUSTEES <i>Karen Traub</i>	367-9826	SHUTES.-LEV. BROADBAND COMM. <i>Weezie Houle</i>	259-1696
CEMETERY COMMISSION <i>Marilyn Tibbetts</i>	259-1976	OPEN SPACE COMMITTEE <i>Janice Stone</i>	259-1557	TAX COLLECTOR <i>Ellen McKay</i>	259-1615
COUNCIL ON AGING <i>Muriel Gross</i>	259-1371	OUR TOWN NEWSLETTER <i>Janis S. Gray</i>	259-1584	TOWN CLERK <i>Leslie Bracebridge</i>	259-1204
CONSERVATION COMMISSION <i>Leave inquiries at</i>	259-3792	PERSONNEL BOARD <i>Margaret Manson</i>	413-230-3038	TREASURER <i>Gabriele Voelker</i>	259-1801
CULTURAL COUNCIL <i>Renee A. Richard</i>	259-9296	PLANNING BOARD <i>Deacon Bonnar</i>	259-1276	TREE WARDEN <i>Thomas Houston</i>	259-1508
DEPT. OF VETERAN'S SERVICES <i>Leo J. Parent, Jr.</i>	863-3205	PLUMBING/GAS INSPECTOR <i>John Letourneau</i>	367-0017	WEB COMMITTEE <i>Fred Steinberg</i>	259-9996
DOG OFFICER <i>Nancy Long</i>	259-1279	POLICE DEPARTMENT <i>Chief Thomas E. Harding</i>	259-1279	ZONING BOARD OF APPEALS <i>Charles J. DiMare</i>	549-5330
ELECTRICAL INSPECTOR <i>Maurice Gregoire</i>	367-9988	<i>Dispatch</i>	625-8200	250th ANNIVERSARY COMMITTEE <i>Janis S. Gray</i>	259-1584
				<i>Maryélise Lamet</i>	259-1551

POLICE, FIRE & RESCUE SQUAD 911